



Smartdent
WE MAKE YOUR CLINIC SMARTER

Smartdent

Dental Equipments

All Products Catalogue

Contact Us

+91 9843752220

+91 9655317661

www.smartdent.in





Planning to set up your ***Dental Clinic?***

Your Dream Clinic, Our Experts Setup

We Bring The Latest Technology, Ergonomic
Designs & Top-Quality
Equipment – All Under One Roof!

Setup Services Include:

Dental Chair Units (Basic to Premium)
Installation, Staff Training & After- Sales Service
Compressors, Scalers, Autoclaves & More
Digital X-ray Systems (RVG, OPG, CBCT)

Why Choose Us?

Premium Quality Products
Customised Setup
Professional Support
Clinic Delivery & Setup
Affordable Packages
Trusted by 1000+ Dentists

Let's turn your dream clinic into a reality!

Contact Now:

+91 9843752220 / 9655317661

www.smartdent.in



Dental Chairs

Contact Now:

+91 9843752220

+91 9655317661

www.smartdent.in

**16, Maruthi Nagar,
Chinnathirupathi, Salem – 636008**

CHAMUNDI⁺

DENTAL CHAIR MOUNT UNIT



CHAMUNDI

DENTAL CHAIR MOUNT UNIT



Contact Now: +91 9843752220 / 9655317661

Website: www.smartdent.in

MEENAKSHI

DENTAL CHAIR MOUNT UNIT



MOOKAMBIKA

DENTAL CHAIR MOUNT UNIT



Contact Now: +91 9843752220 / 9655317661

Website: www.smartdent.in



SKEMA 8

REWRITES THE FUTURE

Contact Now: +91 9843752220 / 9655317661

Website: www.smartdent.in



SKEMA 5

EVOLVING POTENTIAL

Contact Now: +91 9843752220 / 9655317661

Website: www.smartdent.in



- Programmable Dental Chair with Touch screen control
- Unit fitted with : Floor mount light with, LED (" FARO" MAIA) Operating light having On/Off & intensity control by non- touch sensor.
- Monitor mounting arm :
- Chair Fitted with Most latest memory foam with Ultra Leather covering
- Head Rest having lateral movement, raising and lowering, rotation on central axis with pneumatic rigid lock
- Hand rest, Euro mouldeds rigid, Dropping down for easy access of patient which is most latest
- Spittoon component: Spittoon move automatically over the body
- Synchronised with gorgle and goes back to home position when the chair goes to working position.
- Also can be moved manually.
- Oval shaped bowl to cover more area to easy spitting, detachable spittoon, autoclavable
- Special shape water component, Most graceful and clean.
- Suction tube automatic flushing system both for high and low vacuum tubes to remove bio film with disinfectant and water alternatively.
- **Modular System Trolley:**
- Heavy duty trolley arm system with multi joint for smooth adjustment with pneumatic lock
- Over hanging delivery system :
- Most latest perfect locking by pull, stable, unlocking by pulling and leave the arm.
- Locking pin diecast Aluminium for life long service
- All Valves for air and water are solenoid, Electrically operated 24 VDC valve for life long service
- Brushless Optic Micromotor NSK/W&H fiber optic with internal spray supplied with 1:5 speed increase handpiece with optic light and internal spray push button type.
- Airtor points - 1 No
- Fiber optic airtor tubing with coupling - 1 No.
- 6-way syringe with light - 1 No.
- 3 way syringe - 1 No
- NSK Fiber optic scaler with 3 scaler tips.
- High intensity light cure having 1,800 mw/cm2 from BG Light
- Multifunction foot control,
- Chair control with 7 inch touch screen with HDMI all in one solution in chair powered by 64 bit quad core processor with 8 GB RAM having 4 user control and each user has 4 programmable chair position with zero and gargle position along with water for spittoon and tumbler, also the screens for micromotor control, scaler control, airtor, flush and setting screen.
- Tray Holder with all the movements can slide in the bracket to the desired position.
- Wet-line suction continuous rating 300 L/Minute
- Assistant console on multi joint arm for easy accessibility
- Handpiece flushing with disinfectant solution
- All the handpiece can be flushed together
- Separate switch for cleaning with disinfectant and clean water bottle





Chamundi Plus Dental Chair Mount Unit

- Programmable Dental Chair with 6 programme digital animation on Screen
- **Unit fitted with:**
- Seat, back rest and head rest are thickly cushioned, covered with rexin.
- Floor mount LED light with Camera ("Luvies - Korea) Operating light having On/Off &
- HD recoding storage capacity 4K resolution intensity control by non-touch sensor with 50,000 lux.
- **Monitor mounting arm:**
- Head Rest having lateral movement, rising and lowering, rotation on central axis with pneumatic rigid lock
- Hand rest, Euro moulded rigid, Dropping down for easy access of patient which is most latest
- **Spittoon component:** Spittoon move automatically over the body, synchronised with gorgle, and goes back to home position when the chair goes to working position. Also can be moved manually.
- Oval shaped bowl to cover more area for easy spitting, detachable spittoon, autoclavable
- Special shape water component, Most graceful and clean.
- **Modular Trolley System:**
- Heavy duty trolley arm system with multi joint for smooth adjustment with pneumatic lock
- Over hanging delivery system
- Most latest perfect locking by pull, stable, unlocking by pulling and leave the arm.
- Locking pin diecast Aluminium for life long service
- All Valves for air and water are solenoid, Electrically operated 24 VDC valve for life long service
- Dentist chair control with 3.5" TFT based display with 480/320 resolution minimal design with all dental chair controls.
- Keys are provided for each operation and corresponding indications are shown on the display.
- 6 Programmable chair position option.
- Brushless Optic Micromotor NSK / W&H fiber optic with internal spray supplied with 1:5 speed increase handpiece with optic light and internal spray push button type.
- Airtor points - 2 Nos
- 6-way syringe with light - 1 No.
- 3 way syringe - 1 No
- Supreme optic scaler with five scaling Tip
- Cordless light cure unit - 1 No
- Multifunction foot control
- Wetline suction continuous rating 300L / Minute
- Assistant console on multi joint arm for easy accessibility
- Handpiece flushing with disinfectant solution
- All the handpiece can be flushed together
- Separate switch for cleaning with disinfectant and clean water bottle

Even Cares for Your Eyes
Introducing new Dental Light

Luvis C500



Luvis C500 Technical Specification

Classification	Unit	Specification	Reference
Centre intensity (@ 70Cm)	Min	Lux	3,000 Lux
	Max	Lux	50,000 Lux
Focal Distance	Cm		70
Color temperature (3steps)	K		4,000/4,500/5,000
C.R.I(Ra)	N/A		95
Consumption			<30W
LED life time			50,000LUX

Camera	Specification
Image Sensor	1 / 28" CMOS
Lens	30x Optical zoom
Image Point	2.38 M Pixel
Object Distance (Min.)	600-800mm (1st end)
Video Signal	HD 5Di Coaxial cable 1080p / 1080i / 720p



Body Contoured Electrically operated dental chair equipped with state-of-art microprocessor based chair control system.

- Soft key switches for chair operation.
- Two customizable programmes, zeroposition and gargle position.
- Synchronised movement of back rest and seat rest for patient comfort.
- Articulated Headrest with thickly cushioned rexine.
- Swivelling arm rest for easy patient access.

Maia LED (OEM, Faro, Italy) Operating light having multi surface reflector having 30000lux.

- On / Off and intensity control by non-touch sensor with 3 directional movements.
- Light Fitted on well balanced base mount pillar & sturdy arm for operator's convenience.
- Monitor mounting arm

Easily cleanable chair side blue colour oval glass spittoon with auto water connection for spittoon and tumbler, manually moveable towards the patient chest position for convenience

High and Low vacuum motorised non-stop CRS suction.

- Suction power of 350 Ltr / min.
- Auto drain & Auto flush system.

Assistant side Chair controls.

- High & Low vacuum suction cannulas with individual filters to collect debris with removable tubing to keep hygiene.
- 3-way syringe
- Led Light cure unit (Cord less)

Surgical Cart System Unit :

- Airtor points with tubing & nut fitting - 2 Nos
- Supreme Micro motor 35,000rpm with digital display of speed
- Supreme optic scaler with five scaling tips
- 3-way syringe
- SS Instrument Tray
- Transparent water booster

Multifunction Foot Control

- Joystick function for chair movement, Airtor and Micromotor and scaler Operations

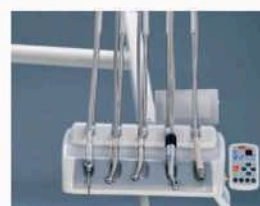
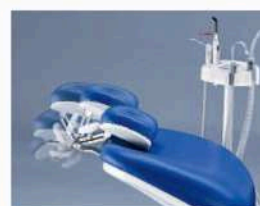
"COMFORT" Dental operator's stool moving on five castors with chromium plated base.

- Pneumatic piston for up down movement, backrest & seatrest.
- Ergonomically designed hand rest for operator's convenience.



FARO MAIA LED: Even the sunlight affects colour perception: at changing of the seasons or hours of the day we see different colours. Therefore it is important to have a light source that, at any time, is able to give accurate information to the doctor. All FARO lamps offer intensity adjustment so that the

visual function can capture the tiny details of the operative field with minimal effort, constantly keeping the colour temperature at 5,000 K.





Chamundi Dental Chair Mount Unit

Body Contoured Electrically operated dental chair equipped with state-of-art microprocessor based chair control system.

- Soft key switches for chair operation.
- Two customizable programmes, zeroposition and gargle position.
- Synchronised movement of back rest and seat rest for patient comfort.
- DArticulated Headrest with thickly cushioned rexine.
- Swivelling arm rest for easy patient access.

Maia LED (OEM, Faro,Italy) Operating light having multi surface reflector having 35000lux.

- On / Off and intensity control by non-touch sensor with 3 directional movements.
- Light Fitted on well balanced base mount pillar & sturdy arm for operator's convenience.
- Monitor mounting arm

Easily cleanable chair side blue colour oval glass spittoon with auto water connection for spittoon and tumbler, manually moveable towards the patient chest position for convenience

High and Low vacuum motorised non-stop CRS suction.

- Suction power of 350 Ltr / min.
- Auto drain & Auto flush system.

Assistant side Chair controls.

- High & Low vacuum suction cannulas with individual filters collect debris with removable tubing to keep hygiene.
- Beecool LED Light cure unit (Cord less)
- 3-way syringe

Modular delivery system (Hanging / Over the Patient)

- Airtor points with tubing & nut fitting - 2 Nos
- Supreme Micro motor 35,000rpm with digital display of speed
- Supreme optic scaler with five scaling tips
- 3-way syringe
- SS Instrument Tray
- X-Ray viewer.

Multifunction Foot Control

- Joystick function for chair movement, Airtor and Micromotor and scaler Operations

"COMFORT" Dental operator's stool moving on five castors with chromium plated base.

- Pneumatic piston for up down movement, backrest & seatrest.
- Ergonomically designed hand rest for operator's convenience.



visual function can capture the tiny details of the operative field with minimal effort, constantly keeping the colour temperature at 5,000 K.

FARO MAIA LED: Even the sunlight affects colour perception: at changing of the seasons or hours of the day we see different colours. Therefore it is important to have a light source that, at any time, is able to give accurate information to the doctor. All FARO lamps offer intensity adjustment so that the





Meenakshi Dental Chair Mount Unit

Body Contoured Electrically operated dental chair equipped with state-of-art microprocessor based chair control system.

- Soft key switches for chair operation.
- Two customizable programmes, along with zero and gargle programme.
- Double Articulated Headrest with thickly cushioned rexine.
- Swivelling arm rest for easy patient access.

LED (EDI, Faro, Italy) Operating light having multi surface reflector with capacity of 30000lux.

- On / Off and intensity control by non-touch sensor with 3 directional movements.
- Light Fitted on well balanced arm for operator's convenience.

Easily cleanable chair side round glass spittoon with auto water connection for spittoon and tumbler. Moveable towards chest of the patient.

High and Low vacuum motorised non-stop CRS suction.

- Suction power of 350 Ltr / min.
- Auto drain & Auto flush system.

Assistant side Chair controls.

- High & Low vacuum suction cannulas
- Beecool cord light cure unit
- 3-way syringe

Modular delivery Hanging system.

- Airtor points with tubing & nut fitting - 2 Nos
- Supreme Micro motor 35,000rpm with digital display of speed
- Supreme optic scaler with five scaling tips
- 3-way syringe
- SS Instrument Tray
- X-Ray viewer.

Multifunction Foot Control

- Joystick function for chair movement.
- Pedal operated airtor and micromotor control.

*** EURO * Dental operator's stool moving on five castors with chromium plated base.**

- Pneumatic piston for up down movement.



Contact Now:

+91 9843752220 / 9655317661

Website: www.smartdent.in



Mookambika Dental Chair Mount Unit

Body Contoured Electrically operated dental chair equipped with state-of-art microprocessor based chair control system.

- Soft key switches for chair operation with Zero programme.
- Articulated Headrest with thickly cushioned rexine.
- Swivelling arm rest for easy patient access.

LED-FSF C-20 Operating light having multi surface reflector with capacity of 50000lux.

- On / Off and intensity control by non-touch sensor with 3 directional movements.
- Reflector ensures the illumination uniformity of the pattern and good shadow less effect.
- Light Fitted on well balanced arm for operator's convenience.

Easily cleanable chair side round glass / porcelain spittoon with auto water connection.

- Auto drain & Auto flush system.
- High and Low vacuum motorised Dryco suction of 275Ltr / min.

Assistant side Chair console.

- High & Low vacuum suction cannulas
- Beecool cord light cure unit
- 3-way syringe

Modular delivery Hanging system.

- Airtor points with tubing & nut fitting - 2 Nos
- Supreme Micro motor 35,000rpm with digital display of speed
- Supreme Non-optic scaler with five scaling tips
- 3-way syringe
- SS Instrument Tray
- X-Ray viewer.

Multifunction Foot Control can be use for Airtor and Micromotor Operating.

- Joystick function for chair movement.
- Pedal operated airtor & suction control

*** SURGI * Dental operator's stool moving on five castors with chromium plated base.**

- Pneumatic piston for up down movement.



Contact Now:

+91 9843752220 / 9655317661

Website: www.smartdent.in



Wave Dental Chair Mount Unit

Body Contoured Electrically operated dental chair equipped with state-of-art microprocessor based chair control system.

- Soft key switches for chair operation.
- Double articulated head rest for patient.

Light :

- Halogen bulb Operating light having glass reflector with two intensity
- On / Off and intensity control by switch.
- Light Fitted on Well balanced arm for operator's convenience.

Easily cleanable chair side round glass spittoon.

Suction

- Air ventury suction.

Assistant side chair console

- High & Low vacuum cannulas
- Beecool cord light cure unit

Modular System

- Modular delivery Hanging system.
- Airtor point with tubing & nut fitting - 1No.
- Supreme Micro motor 35,000rpm with digital display of speed.
- Ultrasonic Non optic scaler with five scaling tip endo chuck - 1No.
- 3way syringe - 1No
- SS instrument Tray.
- X-Ray viewer.

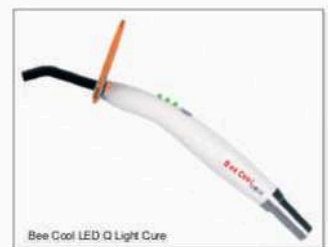
Multifunction Foot control to operate Airtor & Micromotor.

Dental Operator Stool

- " SURGI " Dental operator's Stool moving on five castors with chromium plated base.
- Pneumatic piston for up down movement.

Optional Fittings :

- Airtor Air Compressor.
- Handpieces.



Seating Options

SILVER LINE

Feature

- Packing Size : L x W x H (ins | cm) 53.5 x 32.3 x 263.8 I 136 x 82 x 670
- Product Size : L x W x H (ins | cm) - 72.8 x 33.9 x 22.6/34.6 I 185 x 86 x 57.5/88
- Gross Weight : (lbs | kg) 230.4 I 104.5
- Net Weight : (lbs | kg) 283.3 I 128.5
- Max Weight : 330 lbs
- Motors : 4
- Voltage : 240V
- Frequency : 50Hz
- Standard Control : Handset
- Installation : 2 Person
- Assembly : None
- Upholstery : PU Leather



SERIES-2246EB



Feature

- Packing Size : L x W x H (ins | cm) 136x84x64
- Product Size : L x W x H (ins | cm) 186x56x58x89
- Gross Weight : (lbs | kg) 96/99
- Net Weight : (lbs | kg) 83x86
- Motors : 3
- Voltage : 240V
- Frequency : 50Hz



SERIES - 2246C



PORTABLE DENTAL CHAIR WITH SUITCASE UNIT



Portable Mobile Dental Unit :

- ▲ Portable Chair With Unit and Stool for dental camps
- ▲ Portable Chair Specification:-
- ▲ Made of high quality Aluminum alloy with is strong and corrosion resistant
- ▲ Back adjusts from upright to spine position
- ▲ Ergonomic headrests
- ▲ Retractable handle for convenient transportation
- ▲ With LED light, Spittoon & instrument Tray
- ▲ Chair foldable, Portable
- ▲ One operator stool
- ▲ Mobile unit specification
- ▲ Easily transported impact resistant carrying case with pull out handle and wheels
- ▲ One Saliva Ejector, one 3 Way Syringe,
- ▲ One Air Rotor Point and
- ▲ One Air Motor Point
- ▲ One Built in Air Compressor
- ▲ Low Volume Evacuation
- ▲ Self Contained Water Supply with water reservoir
- ▲ Self-contained bags to save more space
- ▲ Foot Switch

SUITCASE UNIT





Compressor Units

Contact Now:

+91 9843752220

+91 9655317661

www.smartdent.in

**16, Maruthi Nagar,
Chinnathirupathi, Salem – 636008**

All Types Of Airotor Air Compressor

2 HP with DURR -Germany



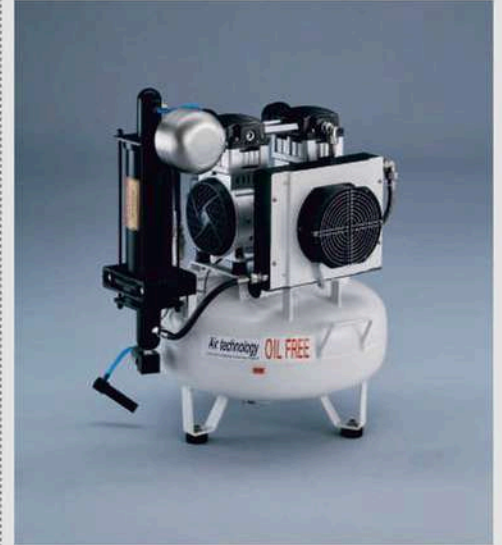
Monobloc Oil-free Medical Grade Airotor Air Compressor 2 HP (Durr, Germany) with radiator cooler, Condensor, Silicon column filter for moisture, dust filter microbial filter fitted on M.S.Tank.

1.5 HP with DURR-Germany



Monobloc Oil-free, Medical Grade Airotor Air Compressor 1.5 HP (Durr, Germany) with radiator cooler, Condensor, Silicon column filter for moisture, dust filter microbial filter.fitted on M.S.Tank.

1.5 HP



Cleanair-200 Monobloc Oil-free Medical Grade Airotor Air Compressor 1.5 HP Minimum noise fitted on MS tank. with radiator cooler, Condensor, Silicon column filter for moisture, dust filter microbial filter fitted on M.S.Tank.

1HP with Filter



Hawa - Monobloc Oilfree, Medical Grade Airotor Air Compressor 1HP Minimum Noise fitted on MS tank.

0.75 HP



Hawa - Monobloc Oilfree, Medical Grade Airotor Air Compressor 0.75 HP Minimum Noise fitted on MS tank.

0.75HP



Eco - Airotor Air Compressor 0.75HP



X-ray Units

Contact Now:

+91 9843752220

+91 9655317661

www.smartdent.in

**16, Maruthi Nagar,
Chinnathirupathi, Salem – 636008**

For that Perfect X-Ray
www.alerio.in

ALERIO[®]
neo
Smaller Smarter Safer



Battery Powered Handheld **Portable Dental X-Ray**



AERB Approved



BIS Certified

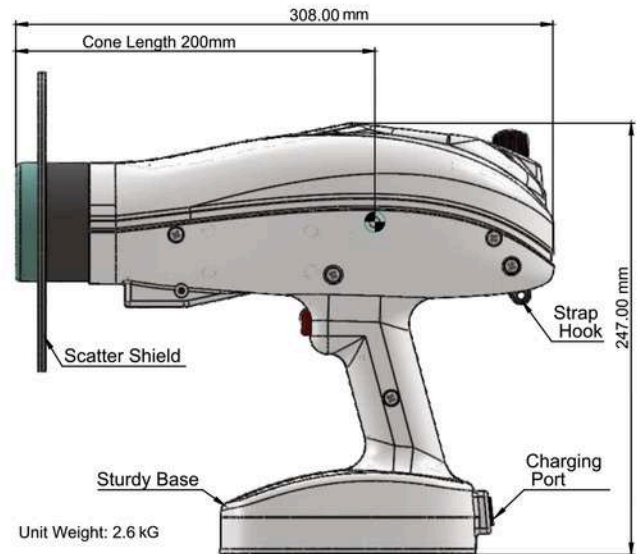


Contact Now: +91 9843752220 / 9655317661

Website: www.smartdent.in



ALERIO neo portable x-ray comes with improved ergonomics, functions and safety. Double shield technology, lead lined cone with scatter shield and a new exposure algorithm ensure best protection for the user and patient. High quality images are possible due to active dose control and the fine focal point. The convenience of portability and superior imaging is now available with local sales and support.



SPECIFICATIONS

Output kV (DC)	60kV / 65kV / 70kV
Tube mA	2.3mA
Exposure Time	0.01s - 1.0s
Focal Spot	0.4mm IEC
Battery	Li-Ion Rechargeable, 2900mAh
Cone Length	200mm, Fixed
Filtration	>1.5mm Al
X-Ray Field	60mm Round
No. of X-Ray per Charge	>200

- ☐ Advanced Electronics Design
- ☐ Lighter and Smaller Size
- ☐ Powerful Heavy Duty Battery
- ☐ Sensor, Film, PSP Compatible
- ☐ Active Dose Control
- ☐ Very Low Leakage Radiation
- ☐ 0.4mm Focal Spot



vatech

MORE



Power



Efficiency



Safety



Smart



Ez Ray Air Plus

SMART UNIT FOR SMART DENTISTS

Ez Ray Air Plus

WORLD'S MOST SAFEST X-RAY UNIT



MORE POWER
New 2500 mAh Battery



MORE SAFE
Longer Cone Length



GUN TYPE UNIT
1.8 kg Single Hand Use



EASY POSITIONING
For Clear Images



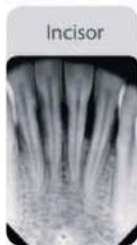
SMART DIAL
Preloaded Functions



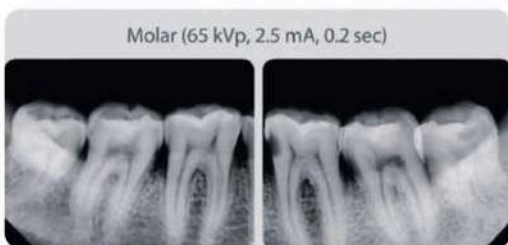
IMPROVED COMPATIBILITY
Wide Exposure Time

WEIGHT INNOVATION WITH CNT (CARBON NANO TECHNOLOGY)

- World's First Dental Application of Carbon Nano Technology
- Lightest Weight Unit - Just 1.8kg
- Easy Single Handling Operations for Stable Positioning
- Optimal Image Quality.



Incisor

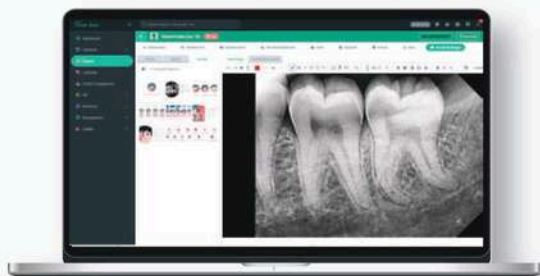


Molar (65 kVp, 2.5 mA, 0.2 sec)

Specifications

Focal Spot	0.4 mm
Tube Voltage [kV]	65 kV
Tube Current [mA]	2.5 mA
Exposure Time Range	0.05 ~ 1.00 sec
Total Filtration	Min. 1.5mm Al
Source to Skin Distance	200 mm
Maximum Duty Cycle	1 : 60
Optional Accessories	Back Scatter Shield, Carry Case

INTEGRATED
PMS



CleverDent

Patient Management Software

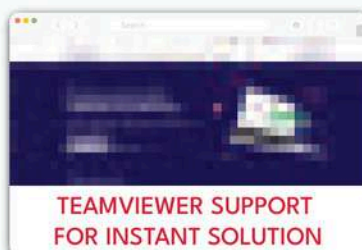
- Fast Installation Setup - Most Simple Design
- Increased Productivity - Faster Patient Consultation
- Enhanced Reputation in Dentistry - Get More Referrals
- Easy Access of Data - From Any Vatech Imaging Software

Widest Sales + SVC Network

450 + DIRECT PARTNERS ALL INDIA

vatech **DIRECT**
123 SVC
FASTEST SUPPORT MECHANISM

Register Your Concern on
www.vatechindia.in/direct



Scan to Visit
Vatech Direct 123 SVC Page



Simply Better

AC IOP X-Rays Machine



Aditya Medical Systems India Pvt. Ltd.

Available Models & Spare Parts

- Floor Model with Regular / Scissors Arm
- Wall Model with Regular / Scissors Arm
- Chair Mount Model with Reg/Sci. Arm
- Stool Model with Scissors Arm



5+3+2,
Fitting to Diverse Shooting Needs with Ease



Two target groups:
Child/Adult



Three device options:
Sensor/Scanner/Film



Five tooth position options:
Molar / Premolar / Incisor
Canine / Bite-wing



Upgraded Protection for Safer Use

Fast screen lock to prevent false touch,
effectively preventing accidental radiation exposure
High-pressure and high-temperature protection
mechanisms with automatic cancellation of exposure
commands when risks are detected

Embracing a new, high-energy era

In comparison to traditional Power Frequency AC machine
the Mini Ray is a High Frequency DC machine with superior performance and produces more stable X-rays.



Parameters:

Tube voltage: 70kV	Tube current: 2mA	DC high frequency
Battery capacity: 2500mAh*3S	Size/length, width and height mm: 338*112*247	Weight: 2.2Kg



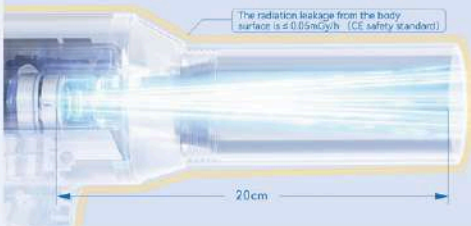
Mini Ray

Power Meets Clarity - 10 Reasons to Choose MINI RAY

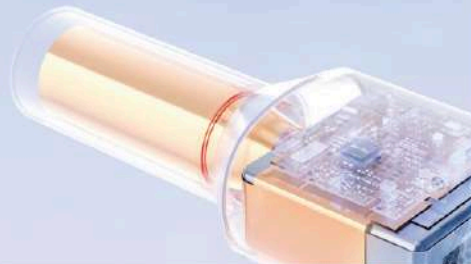


Double Radiation Protection Guaranteed: MINI RAY Complies with International Standards

The distance from the focus to the end face of the beam limiter is 20cm, and the radiation leakage from the body surface is $\leq 0.05\text{mGy/h}$, complying with the CE safety standard, making the shooting safer.



Oil tank and beam limiter use 99.9% pure lead shielding
to maximize the protection against radiation leakage.



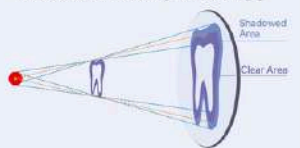
Durable and Dependable

60,000+ Exposure times
High-quality high-frequency
ray tube for longer service life



Essence in the Tiniest Details

0.4mm Focus for more focused x-ray releases
Helps to present clearer high-resolution images
Illustration of the difference between large and small focus imaging.



Get Accurate X-Ray Images Every Time with Sensitive Sensor

USA angle sensor for real-time display of holding angle
Shooting angle can be calibrated as per patient posture
Optimal shooting angle ensures optimum imaging quality



Efficient Handling of Different Shooting Situations

70kV tube voltage for excellent X-ray penetration
2mA tube current for millisecond-level exposure to avoid shadow (Blurred Images caused by unsteady shooting)
140W output power to meet diverse clinical needs



Powerful USA "CHIP" Refreshes the Imaging Technique

Advanced chip enables high-frequency close-loop
control for stable output
Reduces the impact of low battery on image quality
Delivers a worry-free shooting experience



Long-lasting Battery for Uninterrupted Performance

2500mAh*3S High-capacity lithium battery
500+ Shots on a full charge
2h Fast full charge

Clear Large screen Easy to Use

2.8" HD digital screen
Intuitive user interface
Ultra-sensitive buttons
Compact and lightweight design
for easy one-hand shooting!





Digital Sensor RVG, OPG, CPCT

Contact Now:

+91 9843752220

+91 9655317661

www.smartdent.in

**16, Maruthi Nagar,
Chinnathirupathi, Salem – 636008**

NEW **ALERIO[®]**
MEZZO

DIGITAL INTRAORAL X-RAY SENSOR



DISCLAIMER: All information, images and data provided in this document are preliminary and provisional



THE ESSENTIAL TOOL

FOR EVERY DENTIST



Contact Now: +91 9843752220 / 9655317661

Website: www.smartdent.in

NEW **ALERIO[®]**
MEZZO

DIGITAL INTRAORAL X-RAY SENSOR



Chip Type	APS CMOS
Pixel Size	18.5 μm
Active Area	29.6 X 22.2 (mm)
Active Pixel Array	1600 X 1200 (pixels)
Dimension	39 X 28.5 X 6 (H x W x D)
Digitization	12 / 14 / 16 bit
Imaging Time	3 ~ 4 s
Signal Output	USB
Weight of the product	66 grams
User Interface	Alerio Mezzo Imaging Software
Cable length	2 Meter
Certifications & Standards	ISO 13485
Protections	IP68 -Water Resistance

NOW WITH

FIBER
OPTIC
PLATE

DISCLAIMER: All information, images and data provided in this document are preliminary and provisional



THE ESSENTIAL TOOL

FOR EVERY DENTIST



REDEFINING INTRA ORAL SENSORS



EzSensor Classic

A Classic Choice of Classic Clinicians

THE ONLY TRUSTWORTHY BRAND IN MARKET

PROVEN BY 25,000+ HAPPY CUSTOMERS NATIONWIDE

Quality Defining Features



High Image Quality

With 17lp/mm Resolution
Images captured are
always Excellent



Cut Corners & Tapered Edges

Lowers the risk of pain,
Easy Positioning & Optimal
patient comfort



Thin Sensor 4.8

CMOS APS Detector
resulting in easy to
position in patient's mouth.



Water & Dust Resistant

Rated IP68
Protects from water
& Resists Dust



Fast & Efficient Workflow

Direct USB Interface
allows fast & easy
transfer of images



Unique Animated Consultation Videos

Increases Treatment
Acceptance Ratio

With EzSensor Classic

You Get

EzDent-i

Powerful Consultation Tool



Effective Diagnosis + Consultation

2 in 1 communication with **EzDent-i**
Now it's possible to diagnose and consult
at the same time on the same screen.

EzMobile

Fully Immersive Consultation, Anytime



Freedom of Mobility, Image Capturing,
Implant Simulation,
Always be ready with Consultation Video

Benefit of Android Tablet

Mobility
Intuitive User Interface
Cost Efficiency (compared to PC)



Advantage of **EzDent-i**

Simple Image Capture
Dental-specific Simulation Tools
Diverse Patient Consultation Video

*Compatible with Android tablet and work as a client software with EzDent-i

You also get

1 Year Subscription (Worth Rs 9000/-) FREE

Simple, Convenient & Most Secured Practice Management Solution



Manage APPOINTMENTS



Organize PATIENTS



Refer TREATMENTS



Access Information Even
With No Network Connectivity



Fast Installation Setup
Most Simple Design



Increased Productivity
Faster Patient Consultation



Enhanced Reputation in Dentistry
Get More Referrals



Scan the Code to
Download the App
from Playstore



i-Sensor

Clearer & More durable



Durable and Reliable

80000+ bending test

i-Sensor is designed to prevent any kind of damages in its everyday use. Based on actual usage and tens of thousands of bending experiments, the product is durable.

Robust CNC shell fusion ultrasonic welding technology brings ultra-lightweight experience and IP68 protection can be immersed in disinfectant liquid to avoid cross infection.



IP68

Thinnest sensor 4.4mm

With an ergonomically optimized Cut-Corners and 4.4mm thickness, the i-Sensor makes sensor placement easier than ever (plus, the thinner sensor specifically allows for better bitewing radiographs and simplified vertical bitewing acquisition.)

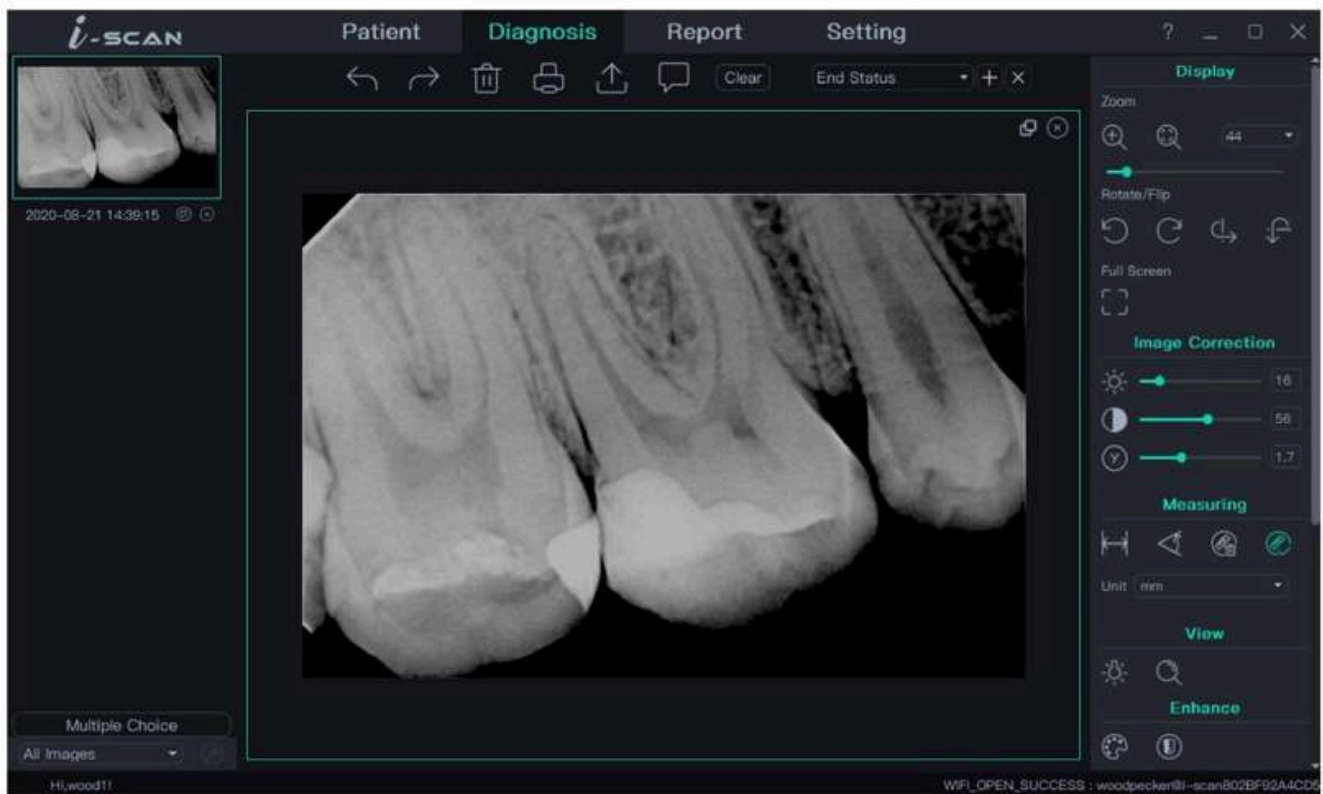


Rounded Corner

Easy-to-use software

Smart and powerful software

i-Sensor provides simple and easy-to-operate software, one-click smart installation and use, and equipped with powerful image processing functions, so you can significantly and quickly improve the quality of radiographs.



**One-click
smart installation**



**User-Defined
Image Processing Tools**



**Free to use
and upgrade**



Sterilization

Contact Now:

+91 9843752220

+91 9655317661

www.smartdent.in

**16, Maruthi Nagar,
Chinnathirupathi, Salem – 636008**

CONFIDENT
STERILINE
 N-CLASS AUTOCLAVE
 22 LITER

AUTOCLAVE
STERILINE⁺
 PROFESSIONAL INTELLIGENT STERILIZATION



- Table top front loading Autoclave. Fully Automatic Micro-controller.
- Highly accurate Semiconductor pressure sensor for 1.2kg.(121 °C) / 2.1kg (134 °C)
- Sterilization Chamber made up of thick stainless steel sheet, tested with high pressure.
- Digital Timer both for wet and dry heat: Wet Timer starts after desired temperature is reached irrespective of load of instruments in Chamber.
- Dry Timer starts automatically after wet cycle is over, resulting in perfect sterilization.
- Silicone Rubber ring-gasket in the door
- Screw Handle for door locking prevents sudden opening of door.
- Auto drain of water and also condensation of steam.
- Auto equaliser of pressure in Chamber for easy opening.
- Finished with heat cured Epoxy powder coating paint.
- Front Panel made of stainless steel.

N-Class Technical Specification :

• Supply Voltage	: 230V AC
• Heater Coil	: 1.5 kW.
• Dry Heater with beads	: 400W
• Temperature sensor	: PT100
• Pressure Control	: Semi conductor linear sensor
• Chamber Size	: 250Dia x 440mm depth
• Dimensions	: 600mm x 400mm x 400mm
• Weight	: 35kg

B-Class Specification :



Normal working condition

Ambient temperature range : +5°C ~ +40°C
 Relative humidity range : ≤85% ;
 Atmospheric pressure : 70KPa~106KPa;
 Water : Distilled water/Purified water.

LCD Display

LCD display function complete, can set up 15 national languages to meet customer needs, with power off after the prompt, machine fault prompt, and fault memory, convenient engineer home maintenance. Automatic atmospheric press detection adjustment, history query, unauthorized disabled etc.

Super Vacuum Pump

The working efficiency is fast, the limit vacuum is up to -90KPa, and the temperature resistance is up to 90°C.

Imported Vacuum Pump

Optional, Japan imported mute Vacuum Pump, light sound, circulating vacuum Principle, small Volume, fast working efficiency, stable.

Printer

In accordance with the regulation of the State Drug Administration, Print disinfection data function, reflect date, time, operation data (like working time, pressure, temperature etc.)

Over-current Circuit Breaker

Current unstable, automatic tripping, protect equipment.

Innovative Steam Generator

The new steam generator concept combine with optimized program to solve the old steam generator blocking, seal aging and leakage problem. The resulting steam safe and reliable. Meantime the use of steam heating water tank, let the outlet water temperature increase to 45degrees or above. To speed up the sterilization time. (steam generator without cleaning all service life. German technology, Domestic leading)

CONFIDENT
STERILINE
 N-CLASS AUTOCLAVE

N-Class Technical Specification :

- Supply Voltage : 230V AC
- Heater Coil : 1.5 kW.
- Dry Heater with beads : 400W
- Temperature sensor : PT100
- Pressure Control : Semi conductor linear sensor
- Chamber Size : 250Dia x 440mm depth
- Dimensions : 600mm x 400mm x 400mm
- Weight : 35kg
- Table top front loading Autoclave. Fully Automatic Micro-controller.
- Highly accurate Semiconductor pressure sensor for 1.2kg. (121 °C) / 2.1kg (134 °C)
- Sterilization Chamber made up of thick stainless steel sheet, tested with high pressure.
- Digital Timer both for wet and dry heat: Wet Timer starts after desired temperature is reached irrespective of load of instruments in Chamber.
- Dry Timer starts automatically after wet cycle is over, resulting in perfect sterilization.
- Silicone Rubber ring-gasket in the door
- Screw Handle for door locking prevents sudden opening of door.
- Auto drain of water and also condensation of steam.
- Auto equaliser of pressure in Chamber for easy opening.
- Finished with heat cured Epoxy powder coating paint.
- Front Panel made of stainless steel.



STERILINE
 PROFESSIONAL INTELLIGENT STERILIZATION



German Ebco

Using German ebco temperature detector to check the temperature of each equipment, can meet the international European Union B class standard, temperature control $\pm 1^{\circ}\text{C}$, make sterilizing more thorough, more drier.



Solenoid Valve

Adopt Italian CEME original Solenoid Valve, large flow aperture, high temperature resistance, can bear pressure more than 6kgs, long service life.



LCD Display

LCD display function complete, can set up 15 national languages to meet customer needs, with power off after the prompt, machine fault prompt, and fault memory, convenient engineer home maintenance. Automatic atmospheric pressure detection adjustment, history query, unauthorized disabled etc.



Over-current Circuit Breaker

Current unstable, automatic tripping, protect equipment



Super Vacuum Pump

The working efficiency is fast, the limit vacuum is up to -90KPA, and the temperature resistance is up to 90°C.



Imported Vacuum Pump

Optional, Japan imported mute Vacuum Pump, light sound, circulating vacuum Principle, small Volume, fast working efficiency, stable.



Printer

In accordance with the regulation of the State Drug Administration, Print disinfection data function, reflect date, time, operation data (like working time, pressure, temperature etc.)



Innovative Steam Generator

The new steam generator concept combine with optimized program to solve the old steam generator blocking, seal aging and leakage problem. The resulting steam safe and reliable. Meantime the use of steam heating water tank, let the outlet water temperature increase to 45degrees or above. To speed up the sterilization time. (steam generator without cleaning all service life. German technology, Domestic leading)

European B Class Autoclave

AUTOCLAVE

FENG 23L TOUCH SCREEN AUTOCLAVE

Redefining The Sterilization Excellence

- ✦ B type fully automatic front-loading autoclave powered by triple vacuum cycle
- ✦ Temperature Selection - 121° C / 134° C/ B+
- ✦ Double door lock system for safety
- ✦ 5 Programs for sterilization of all types of instruments – Solid/Hollow, Porous/Non-Porous etc.
- ✦ Built-in water quality sensor
- ✦ Bow and Dick test qualified
- ✦ Touch screen control panel
- ✦ Big open tank, easy to clean
- ✦ Data storage facility with USB functioning (2000 cycles)
- ✦ Steam generator cleaning program to increase the efficiency of the autoclave
- ✦ Chamber size: 250 mm x 450 mm
- ✦ 9 nos. error codes for self diagnosis
- ✦ Inbuilt USB & printer port with micro printer (optional)
- ✦ Product Size: 594X468X453mm
- ✦ Net Weight: 50Kg
- ✦ Voltage: 230 V 50/60Hz
- ✦ Power: 1800W
- ✦ Water tank capacity: 4.5Ltr
- ✦ One cycle water consumption: 600ml



Website: www.smartdent.in

Work Mode Chart

Cycle Mode	Ster. Temp (degree)	Ster. Press (Kpa)	Ster. Time (Min)	Drying Time (Min)	Complete Time (min)
Unwrapped Cycle	134	210	4	10	35
Universal B Cycle	134	210	6	15	50
Rubber & Plastic unwrapped cycle	121	110	16	10	45
Rubber & Plastic wrapped cycle	121	110	20	15	60
18 min B cycle (Prion)	134	210	18	15	60
Ster. Result Testing Cycle (B&D Test)	-	-	-	-	30
Vacuum Leakage Testing Cycle	-	-	-	-	20

23 Ltr Touch Screen B-Type front loading Fully automatic with USB RECORDER



USB Record Read



Six Layer Pot Body Structure



Heat Dissipation Structure



Double Door Lock Protection

UV Cabinets for Instruments



**UV-C LIGHT
STERILIZER**
Various Automated Pharmaceutical

SINGLE DOOR
CABINET



SINGLE DOOR
CABINET





Other Dental Equipments

Contact Now:

+91 9843752220

+91 9655317661

www.smartdent.in

**16, Maruthi Nagar,
Chinnathirupathi, Salem – 636008**

Cabinets



Cabinet with Top Glass



Cabinet Top SS with Locker



Cabinet with ABS



Cabinet Top SS with MS Body



Trolley



Instrument Trolley



Wheel Mount Trolley



Handpiece Trolley



DENTAL OPERATOR'S STOOLS

COMFORT



SURGICAL



EURO MOULDED



DENTAL LOUPES

CH250-RBPSL+YHL-ANRL HEADLIGHT(110V)



Packaging : 1 Kit :

Frame
 Battery
 Adapter
 Screw Driver
 LED light
 Cleaning Cloth

Order Code : 250RBPSL

CH350-RBPSL+YHL-ANRL HEADLIGHT (110V)



Packaging : 1 Kit :

Frame
 Battery
 Adapter
 Screw Driver
 LED light
 Cleaning Cloth

Order Code : 350RBPSL

DENTAL WATER DISTILLER PLANT



DESCRIPTION :

The basic principle behind making distilled water is to boil water into steam, then to cool it to collect the pure water from the vapour. The main advantage of distilled water is that it is 100% boiled, sterilized, clean, safe, and environmentally friendly.

CHARACTERISTICS :

- Zinc coated steel round shaped shell
- White top
- Stainless steel lower cover

FEATURES :

- A variety of safety certifications that are recognizable internationally, which guarantees our product safety.
- We have exported 98% of our products outside of Taiwan for over 20 years; therefore, our reputation is guaranteed.
- We are professional manufacturers. We provide excellent product quality, and efficient after-sales service that allow our consumers to use our products safely.
- All our materials adhere strictly to the RoHS standard.
- No installation required, does not take a lot of space, and easy to operate.
- Easy to maintain and easy to clean.

Code: WDP

CONFIDENT HIGH VACUUM SUCTION

Functions:

- High Vac mobile Suction is designed for individual chair.
- Motorised Suction using most powerful Suction Motor.
- Fully automatic with auto drain and auto flush.
- The unit is mobile by smooth castors.
- High and Low Suction works on same motor.
- The motor starts as soon as you take out trip from the holder.





Extraordinary compatibility

Its wide torque and speed range makes it compatible with various file systems on the market such as FKG XP-endo Shaper (recommended speed: 800-1000rpm) and Dentsply Protaper Gold (recommended maximum torque: 5N.cm).

Torque: 0.6-5N.cm

Speed: 100-1000rpm

Built-in various file systems

Built-in file systems include all mainstream file systems, making treatment more convenient.



E-COM

Effectively prevent file breakage

Real-time dynamic torque display and torque control help realizing automatic reverse, effectively avoid instrument separation.

Wireless handpiece

Eliminate the constraint of tail cord, enabling flexible use and easy storage.
Ergonomic design brings comfortable handling.

Clear OLED screen

Free from limit of viewing angle. Display clearly even under strong light.
See speed, torque, and battery level at a glance.

Customization

Continuous motion, reciprocating motion, and reverse motion are for options.
It can store 9 user-defined modes.

New model TCS-TS2 is launching!



DENTAL SUCTION DEVICE



TCS-TS 2

High suction power

Controllable suction performance volume

Reliable technology

Automatic drain system by centrifuge separation

Flexibility

Install anywhere - beside your dental unit



TCS-TS 2

Tokyo Giken, built up high trust from 50 year history as a leading dental suction manufacturer, has designed new model of suction device with automatic drain function by centrifuge separator.

Compact but high performance makes it possible to deal



Stylish but calm design could be installed besides dental unit or in the treatment room.

Also, since PBT polyester has an excellent durability from UV, it could be placed outside.

Maximum flow rate of drainage is 18.8L/min by automatic drain separator.



Advanced technology in the compact body



Super Bio Filter



Collect the contaminants of 0.3um or more at the efficiency of over

99.97%

Power source	Single phase 220-240VAC
Power current	5.9A
Power output (rated motor)	0.7kW
Frequency	50Hz/60Hz
Air flow rate and pressure (at maximum of suction pressure volume)	16.0kPa at 0.3m3/min
Performance Variability (Closing operation suction pressure)	0kPa ~ 20kPa
Size W×D×H (excluding hoses and wires)	385mm×330mm×445mm
Weight	21.1kg
Maximum use	1port
Product Code	W047

*Testing condition is 20°C. *Specifications are subject to change without prior notice.

Tokyo Giken, Inc. is No.1 market share of dental suction device in Japan

Tokyo Giken, established in 1968, is a leading manufacturer of dental suction and device related to machinery room.

In addition to the head office in Tokyo and Factory in Yokohama, we have four sales offices to distribute throughout Japan

★ Dental clinics in Japan Device related to machinery room Market share No.1

★ All dental University in Japan Installation record 29 Schools

★ Certificated by ISO9001 and ISO13485 MADE IN JAPAN of manufacturing

★ Number of external oral suction sold in Japan. +50,000 arms!!

★ For the overseas activities, there are many achievements such as university hospitals and ODA projects.

Impressive performance wet and dry



DÜRR DENTAL has the right suction solution for every practice.

When it comes to remodelling or modernizing a dental practice, the V and VS suction systems can be used even in difficult installation conditions.

Wet VS suction systems. Powerful and cost-effective.

VS stands for the combination of vacuum generation and separation. All of the suction and separation tasks in the practice are centrally combined in a VS suction unit on a single drive shaft. As a result, there is no need for additional automatic separators on the various treatment units and the operating costs are lower than with traditional systems such as water ring pumps. DÜRR DENTAL VS suction systems can extract large quantities of liquids processed by up to four therapists at the same time without interruption. Thanks to the integrated two-stage separation system, the aspiration of secretions and blood foam into the turbine space is reliably prevented.



This is what counts:

- Corrosion protection for housing parts and impellers
- High-quality, robust drive motors
- Reliable function in continuous operation
- Highly cost-effective with minimal space requirements
- High suction power within seconds
- Automatic removal of deposits

*Also available as a dry variant



VS 300 S*

Number of practice treatment chairs: 1-2
Number of therapists working at the same time: 1



VS 600*

Number of practice treatment chairs: 2-3
Number of therapists working at the same time: 2



VS 900 S*

Number of practice treatment chairs: 3-5
Number of therapists working at the same time: 3



VS 1200 S*

Number of practice treatment chairs: 4-6
Number of therapists working at the same time: 4

EQUIPMENTS : NSK

NSK
Create it

" WE ARE THE ONLY DISTRIBUTOR FOR
COMPLETE RANGE OF
GENUINE **NSK** PRODUCTS "

NSK Original Cartridges and
Spares available in Confident

500ml Spray Bottle
Order Code : 134301



**Upgrade to
Premium Oil Spray
to keep your NSK
products hygiene
and disinfect**



✓ INSIST ON WARRANTY CARD, ALL NSK PRODUCTS COMES WITH MINIMUM SIXTH WARRANTY

DynaLED

Self Illuminating LED

**UPGRADE
TO OPTIC**

NSK DynaLED turbine handpieces take advantage of NSK micro precision engineering, resulting in high performance and long term reliability. These innovative turbines include a dynamic integrated mini power generator which delivers long life and daylight quality LED illumination when connected to any standard non optic air tubing. Clinicians can instantly gain the advantage of LED illumination on their existing or new dental equipment, simply for the cost of the turbine. NSK has chosen stainless steel for DynaLED turbines to give high priority for durable, stable and long term function.



Miniature MODEL M500LG M4 ORDERCODE P1105
• Midwest 4 hole

Miniature MODEL M500LG B2 ORDERCODE P1107
• Borden 2 hole

Standard MODEL M600LG M4 ORDERCODE P1104
• Midwest 4 hole

Standard MODEL M600LG B2 ORDERCODE P1106
• Borden 2 hole

PanaAir FX

Technological Superiority
Unrivalled Reliability

PanaAir FX offers much more endurance and power than previous models, while being just as easy to handle. Its sleek design provides maximum visibility of the operating field, easily reaching all areas of the oral cavity.

30% Power Boost

PanaAir FX is dramatically more powerful than its predecessors thanks to the combination of NSK's air turbine simulation technologies. Rated at a maximum of 20 watts, this new model boasts the highest power rating in its class. That concentrated power, along with the bur's high rotational accuracy, creates a synergistic effect that ensures fast, precise treatments.



Standard MODEL PAF-S B2 ORDERCODE T1070
Borden 2 hole

Standard MODEL PAF-SU B2 ORDERCODE P1226
Borden 2 hole

NSK Original Cartridges and Spares available in Confident

Contact Now: +91 9843752220 / 9655317661

Website: www.smartdent.in

FX series

A New Legend Begins



MODEL FX22 ORDER CODE C1129

1:1 Direct Drive • For CA burs (ø2.35)
• Latch type • Max Speed : 30,000 min⁻¹



MODEL FX23 ORDER CODE C1056002

1:1 Direct Drive • For CA burs (ø2.35)
• Push Button Chuck • Max Speed : 30,000 min⁻¹



MODEL FX25 ORDER CODE C1052002

1:1 Direct Drive • For CA burs (ø2.35)
• Push Button Chuck • Clean Head System
• Ball Bearing • Max Speed : 40,000 min⁻¹

Straight Handpiece



MODEL FX65 ORDER CODE H1014002

1:1 Direct Drive • For HP burs (ø2.35)
• Clean Head System • Max Speed : 40,000 min⁻¹

S-Max M

Incomparable Powerful Cutting
and Superb Grip

• Stainless Steel Body • Cellular Glass Optics
• Clean Head System • Push Button Chuck (Exclude M65)



Optic MODEL M95L ORDER CODE C1023

1:5 Increasing • Quattro Spray • For FG burs (ø1.6)
• Ceramic Bearings • Anti Heat System
• Max Speed : 200,000 min⁻¹



Optic MODEL M25L ORDER CODE C1024

1:1 Direct Drive • Single Spray • For CA burs (ø2.35)
• Max Speed : 40,000 min⁻¹

Straight Handpiece



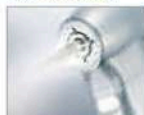
Non-Optic MODEL M65 ORDER CODE H1008

1:1 Direct Drive • Single Spray • For HP burs (ø2.35)
• For CA burs (ø2.35)* Max Speed : 40,000 min⁻¹
* Need to insert the supplied bur stopper

Ti-Max Z Optic

Contra-angle Series

Quattro Spray



Easy on/off Switch (Z95L, Z45L)



Switch between water
jet (water only) and
water spray
(water and air mist)
in an instant.



MODEL Z95L ORDER CODE C1034

1:5 Increasing • Exceptional Durability • Quattro Spray
• For FG burs (ø1.6) • Ceramic Bearings • DLC Coating
• Anti Heat System • Max Speed : 200,000 min⁻¹



MODEL Z45L ORDER CODE C1064

1:4.2 Increasing • For FG burs (ø1.6)
• Max Speed : 168,000 min⁻¹

NSK Original Cartridges and Spares available in Confident

Bee Cool LED

SUPREME - LIGHTCURE

LED is composed mainly of main unit, optical fiber light hood high power LED light cure unit.

- A) Sealed, connect to dental unit.
- B) Time setting: 10s, 20s, 30s.
- C) Working mode: Full.
 - According to the classification of power supply
 - Connect to dental unit —24V
 - Power input: —24V 50Hz/60Hz 0.4A Max
 - Light source
 - 3W high power blue LED light Wave length: 420nm-480nm
 - Light intensity: 1000mW/cm²-1200mW/cm²
 - Inspection method: If the LED light shines when operate correctly, it's in good condition.
 - Clinical commonly used resin can match with the wavelength, such as 3M, Dentsply etc.
 - Radiation during 400nm-515nm(blue light): 250mW/cm²
 - Optical active area: 50mm²

Working condition:

- Environment temperature: 5°C to 40°C
- Relative humidity: 30%-75%
- Atmosphere pressure: 70kPa to 106kPa
- Dimensions: 248mmx26mmx26.5mm
- Net weight: 127g



FDA CE

Bee Cool LED Cordless

DENTAL FIBER OPTIC LIGHT LED B



Constant light intensity
The solidification effect is not
affected by the consumption
of remaining power.



Industrial design patent No.: CN 200730092316.9

FDA CE

Detachable handpiece with light

Shell of the handpiece is made of special imported plastic from America.

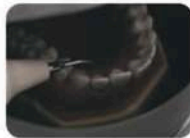
Without cracking or deformation under the pressure.

Detachable handpiece with light, better visibility.

Note : This type can match with handpiece without light.



LED with light effect



Without light effect

UDS-N2 LED (Detachable handpiece HW-5L)

UDS-N2 (Detachable handpiece HW-3H)



Optic
Code: UDSN2A



Non-Optic
Code: UDSN2B

EQUIPMENTS : ALPRO- WASHING MACHINE & BG LIGHT-LIGHT CURE

ALPRO TREATMENT SYSTEM

Automatic Instrument Processing



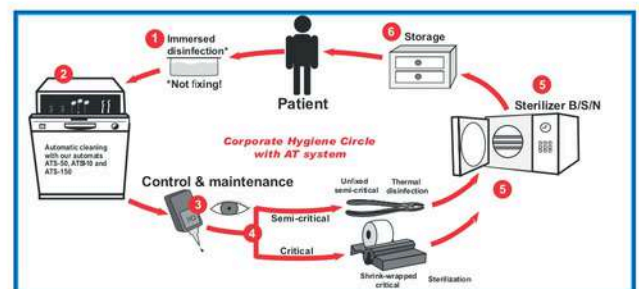
Big - ATS - 150
Product Code : ATS150

Small - ATS - 110
Product Code : ATS110

Product Description

Replenishment Display for decalcification device at internet space fill level of clean rising agent in the door or the device
Multiple water proofing with aquastop program flow and balance time display.

The hygiene cycle with the AT-System in consideration of the recommendations/guidelines of
RKI- UVV/BG - BZAK - DAHZ - DGSV





We do all Dental Handpieces & Equipment Services



Contact Now: +91 9843752220 / 9655317661

www.smartdent.in

**we upgrade your all dental chairs
& Equipments to new version in
best quality & Best Price**

Before



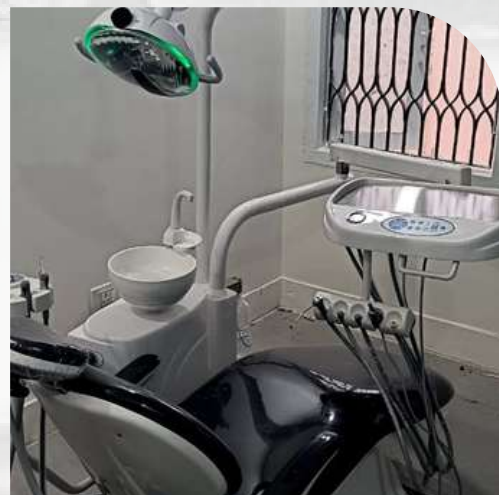
After



Before



After



We Deal with Brands



vatech



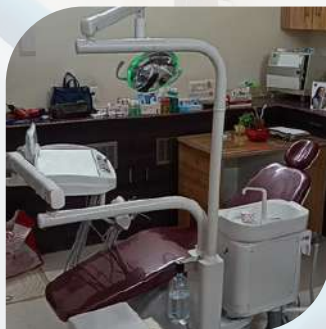
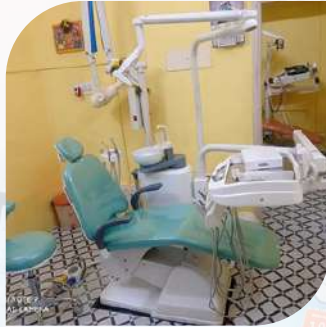
Contact Now: +91 9843752220 / 9655317661 www.smartdent.in

Our Works





Smartdent
WE MAKE YOUR CLINIC SMARTER



Contact Now: +91 9843752220 / 9655317661 www.smartdent.in



Smartdent
WE MAKE YOUR CLINIC SMARTER

Thank You

Contact Now:

+91 9843752220

+91 9655317661

www.smartdent.in

**16, Maruthi Nagar,
Chinnathirupathi, Salem – 636008**